

SynSisal[®]

Lookbook





Contents

4	Sisal Without Limits
12	Sustainability
14	SynSisal® Signature Collection
20	Astoria
22	Langley
24	Medina
26	Ravenna
28	Winthrop
31	SynSisal® Signature Specifications
32	Workspace
36	Hospitality + Resort
42	Store Design
46	Residential
48	SynSisal® Tile Collection
52	The Sisal Mirage
54	Installing SynSisal® Tile
57	SynSisal® Tile Specifications



sisal
without
limits 



Reimagining THE CLASSIC SISAL LOOK with new materials.

When we launched our **SynSisal® Signature** collection in 2020, our vision has always been “sisal without limits”—to capture the beloved organic texture, warmth, and character of sisal carpet with low-impact technical materials, freeing it from the performance limitations of natural fiber.

Since then, **SynSisal® Signature** has become the premier option for designers looking to bring sisal-look rugs and carpet to demanding commercial settings including lobbies, conference and guest rooms, and staircases.

Now, that vision expands.

SynSisal® Tile opens the collection into a modular format—creating new possibilities for large-scale commercial and hospitality spaces where flexibility and ease of installation matter as much as design.



Inspired by natural beauty



Craftsmanship in every detail





Performance built to last



SUSTAINABLY CRAFTED

made with **ECONYL**[®]
ENDLESS POSSIBILITIES

Sustainability is at the core of our philosophy. We craft enduring, high-performance floor coverings from low-impact materials, balancing environmental responsibility with refined, natural aesthetics.

That's why SynSisal[®] is made using 100% recycled or regenerated technical materials.

Both our SynSisal[®] Signature and Tile collections are made using 100% ECONYL[®] regenerated nylon yarns sourced from old nylon carpet scraps, post-consumer waste, and fishing nets recovered from our oceans.

 **sisal without limits**

SynSisal® Signature

Astoria
Langley
Medina
Ravenna
Winthrop

Custom Rug Borders



SynSisal® Signature

Our Signature SynSisal® collection consists of five naturally beautiful flatwoven structures, available in custom area rugs and carpet.

SynSisal® Signature is made with ECONYL® regenerated nylon fibers that are intrinsically stain-resistant and designed for heavy contract applications.

Sisal-look
Heavy Contract, Class 33
Made with ECONYL®

Stain-resistant
Soft underfoot
Stocked in the US & EU

5 Classic Sisal Structures



Astoria



Langley



Medina



Ravenna



Winthrop

Where high design meets low impact.

Our five SynSisal® Signature weaves deliver sustainable performance with ECONYL® 100% regenerated nylon—made from old nylon carpet scraps, discarded fishing nets and fabric scraps.

The result: a lower-impact, contract-grade synthetic alternative to natural sisal.

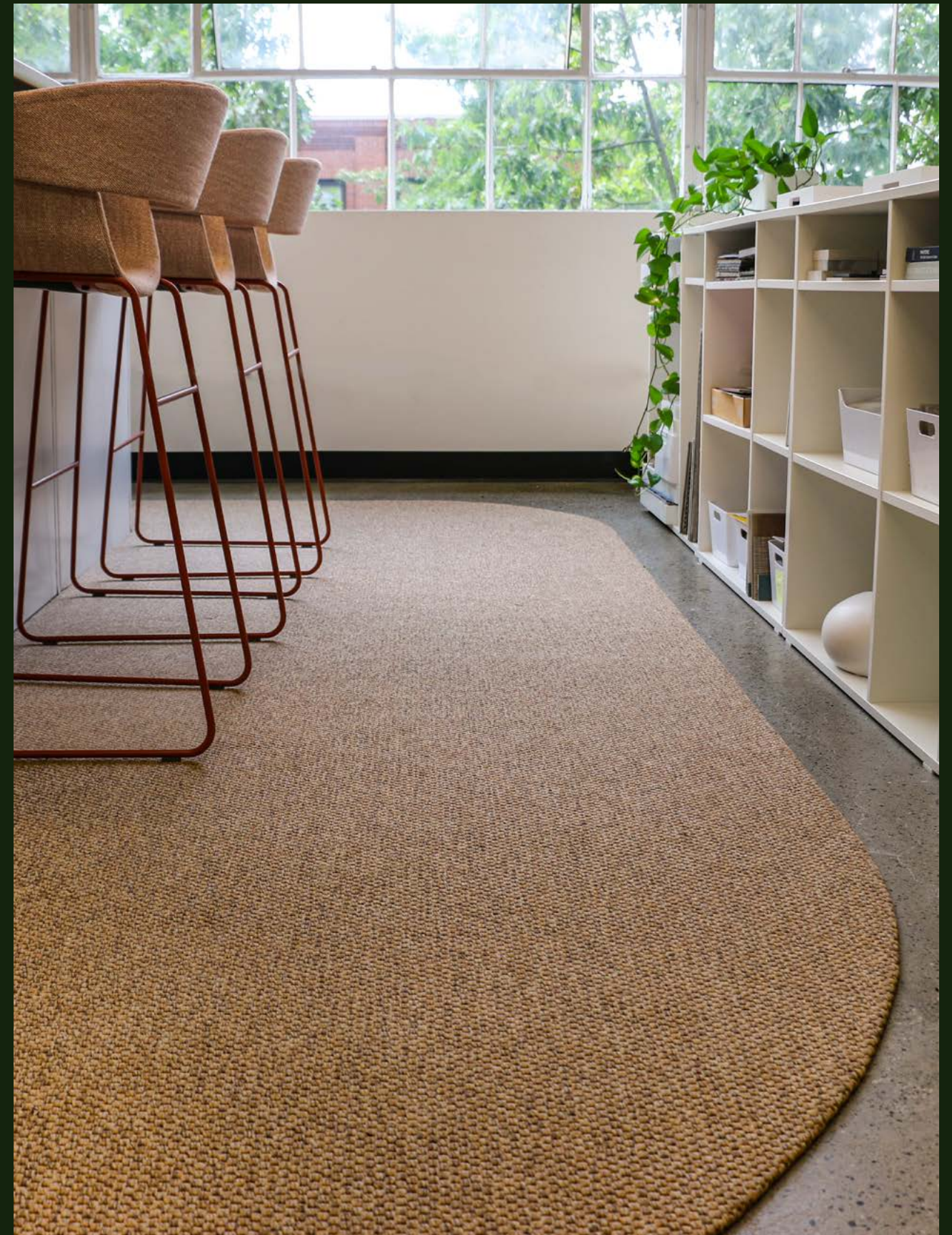
Made using 100% regenerated ECONYL®

Declare® LBC Red List Free

Blue Angel certified (DE-UZ 128)

Contributes to LEED v4 / v4.1 EQc2 requirements

Supports BREEAM Hea 02 exemplary level criteria



Astoria

A sophisticated, modern herringbone pattern that brings movement and character. An excellent choice for high-traffic living areas, stairs, boutique retail spaces, and commercial spaces.



Harvest



Honey



Cedar



Mesquite



Smoke



Bark



Mink

Langley

Thick yarns contribute dimension, stability, and texture to this organic structure.

Langley offers comfort underfoot, a glamorous tiger-eye pattern, and easy maintenance.



Harvest



Honey



Cedar



Mesquite



Smoke



Bark



Mink

Medina

Refined and timeless, this tight loop bouclé offers rich texture and supreme durability.

Hotel lobbies, boutique retail spaces, offices, and residences will benefit from Medina's organic beauty, low maintenance, and versatile neutral colorways.



Medina | Bark
Knotel Old Sessions House | London, United Kingdom



Harvest



Honey



Cedar



Mesquite



Smoke



Bark



Mink

Ravenna

Commonly referred to as a Panama pattern, Ravenna's basketweave structure adds depth and texture with interlaced one-over-one threads of yarn. Beautiful yet strong enough for bustling residential, hospitality, or commercial spaces.



Harvest



Honey



Cedar



Mesquite



Smoke



Bark



Mink

Winthrop

A classic sisal design with thick yarns woven into irregular loops, creating a refined rib pattern.

Winthrop fits seamlessly into a variety of interior styles and can act as a neutral foundation on which to layer other design elements.



Harvest



Honey



Cedar



Mesquite



Smoke



Bark



Mink

SynSisal®



Signature | Specifications

Product Overview

Product Type	Carpet and Rug
Recommended Use	Indoor, Heavy Contract, Class 33
Pile Material	ECONYL® PA6, Regenerated Nylon
Roll Width	13' 2" or 4 m
Country of Origin	Europe

Construction

Production Method	Woven
Weave Structure	Loop Pile / Fine Bouclé
Pile Weight	51 oz/yd ² or 1210 g/m ²
Total Height	3/16" or 5 mm
Total Weight	86.9 oz/yd ² or 2,200 g/m ²
Primary Backing	XBR Latex
Secondary Backing	Textile / Actionbac™

Performance

Use Class	Indoor, Heavy Contract, Class 33
Fire Rating	Bfl-s1 / Cfl-s1
Cleanability	Easy to clean
Castor Chair Suitability	Intensive use
Stair Suitability	12,000-4
Anti-static Behavior	Xd .82-Xw .60
Color Fastness to Light	7-8
Impact Sound	IIC62
Hexapod	12,000-4
Noise Reduction Coefficient	SAA .23
Thermal Resistance	R-value: 0.13-0.14



Workspace



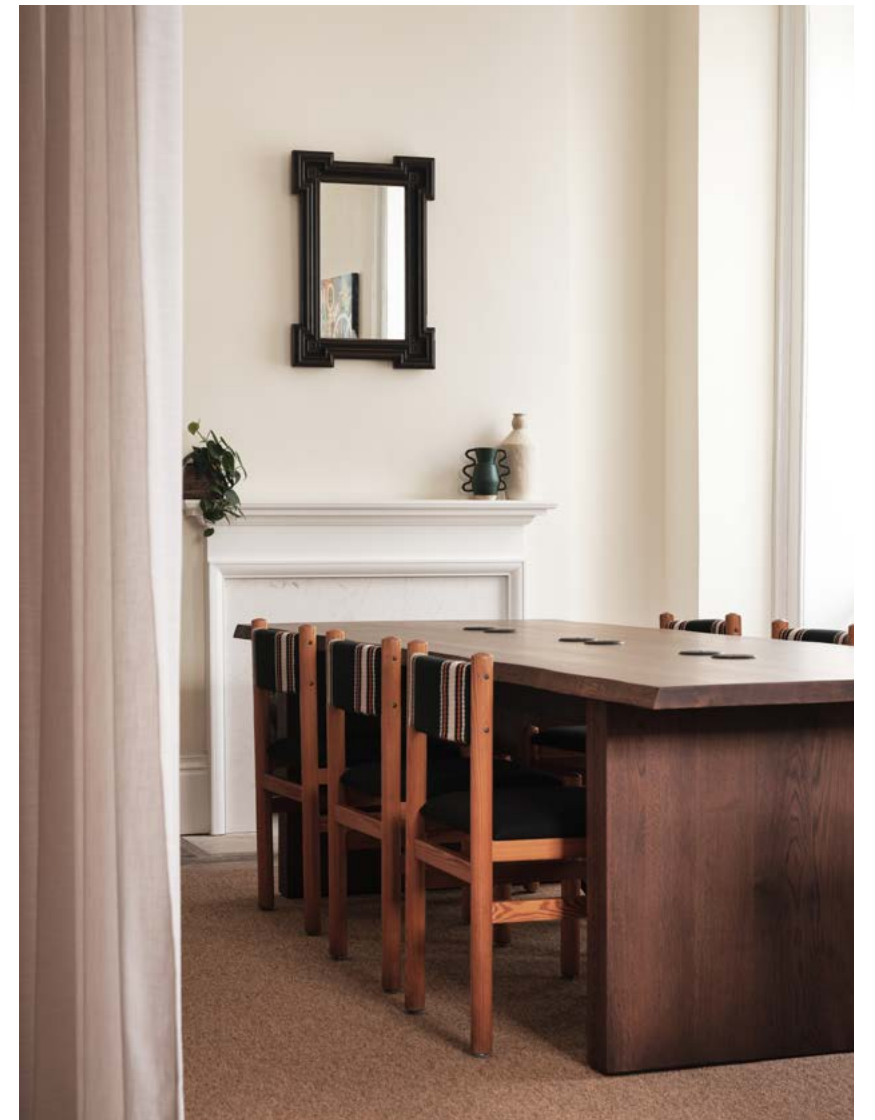
Langley | Mink
Design Well Spent | Seattle, WA



Medina | Cedar
Vegamour Offices | Los Angeles, CA

Langley | Mesquite
Design Well Spent | Seattle, WA





Medina | Bark
Knotel Old Sessions House | London, United Kingdom

Hospitality + Resort



Ravenna | Harvest
Hotel Lobby



Langley | Honey

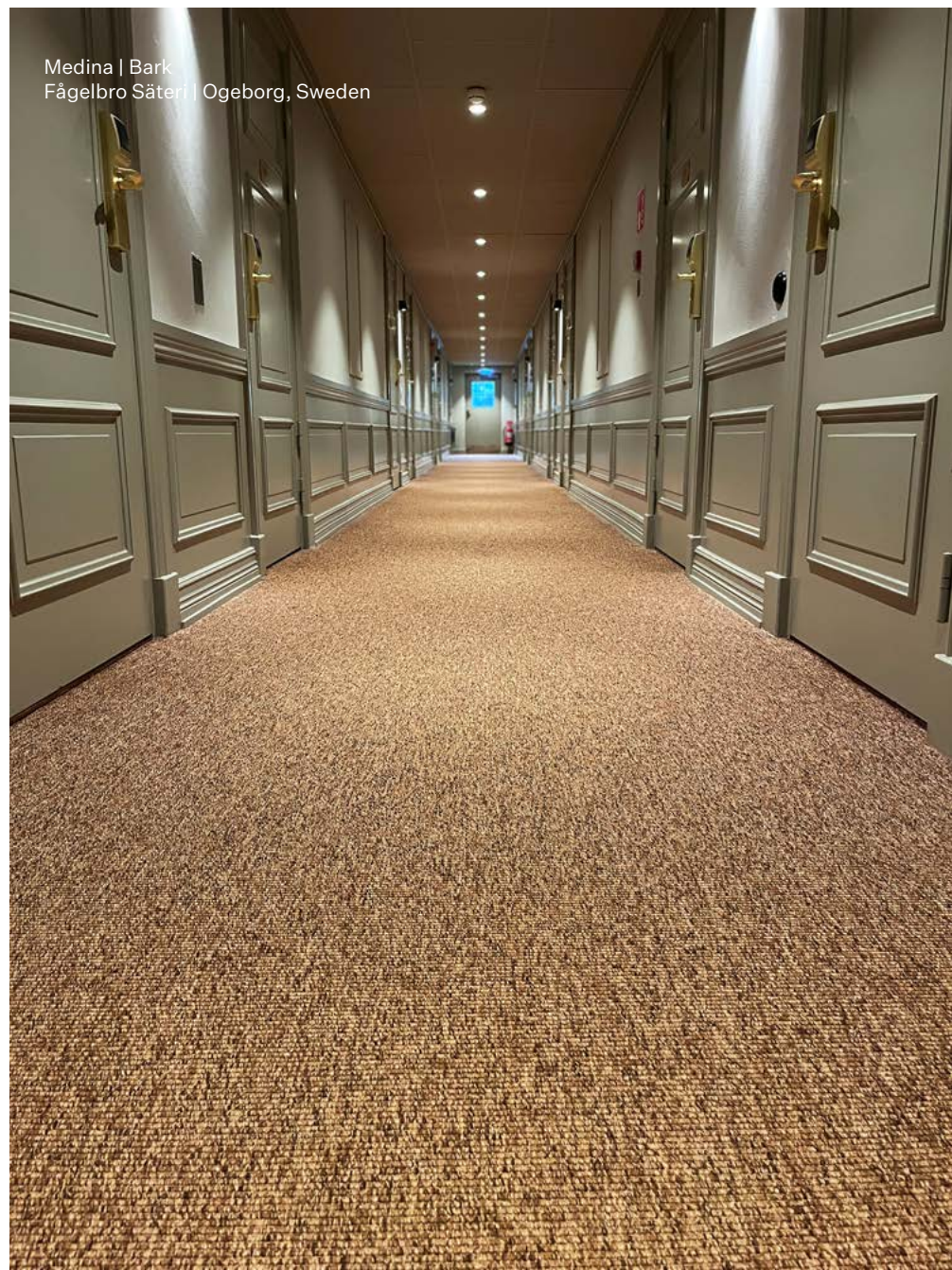


Astoria | Honey
The Bull | Charlbury, United Kingdom





Medina | Bark
Hotel Lobby Large Runner

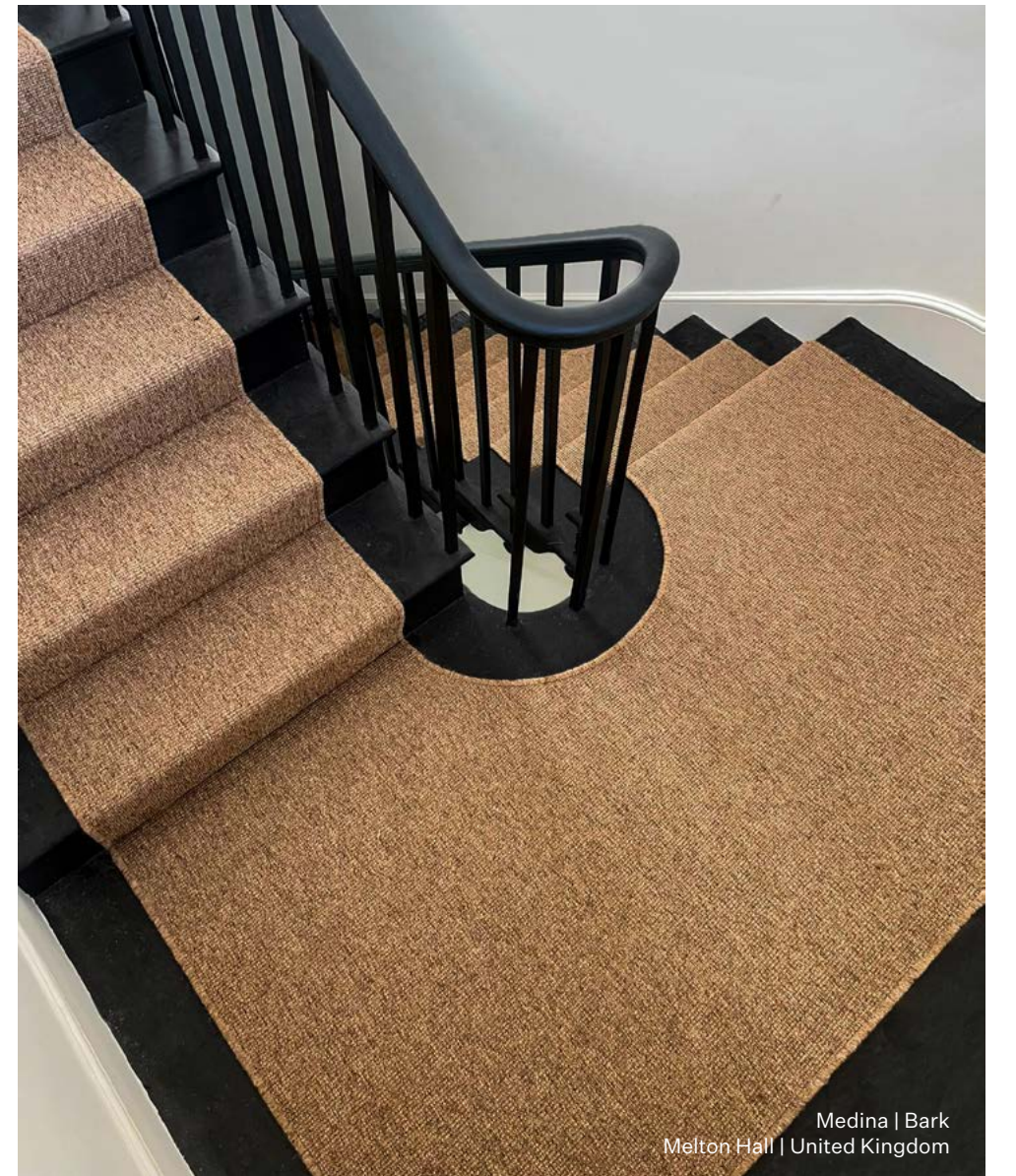


Medina | Bark
Fågelbro Säteri | Ogeborg, Sweden



Astoria | Mink
Dunluce Lodge | Portrush, Ireland





Medina | Bark
Melton Hall | United Kingdom

Medina | Bark
Hotel Restaurant | Australia



Medina | Bark
Hotel Lobby | New York, NY



Medina | Cedar
Chandon Club Lounge | Yountville, CA

Store Design



Astoria | Mink
Global Retailer



Langley | Bark
Global Retailer



Medina | Mesquite
Hackett | London, United Kingdom



Astoria | Mesquite
Hackett | London, United Kingdom



Astoria | Mink
Global Retailer



Medina | Mink
Hackett Fitting Room | London, United Kingdom



Langley | Bark
Global Retailer

Residential



Astoria | Mesquite
Brian Paquette Interiors | Seattle, WA



Ravenna | Honey
Living Room | Residential



Astoria | Honey
Living Room | Residential



Winthrop | Bark
Special cut-out rug | Residential

SynSisal[®] Tile



Ridge



SynSisal® Tile Ridge

SynSisal® Tile opens the collection into a modular format—creating new possibilities for large-scale commercial and hospitality spaces where flexibility and ease of installation matter as much as design.

Designed to replicate the pattern of tight-woven sisal bouclé, Ridge is our first SynSisal® Tile structure, bringing subtle linear depth and dimension to a modular sisal-look tile fit for commercial spaces.

Natural sisal-look
Modular
Heavy Contract, Class 33
Self-stick installation

Easy to clean
Soft underfoot
Made with ECONYL®
Stocked in US & EU



Ridge | Honeycomb
Lobby | Seattle, WA

4 Classic Tones



Honeycomb



Pebble



Shale



Walnut

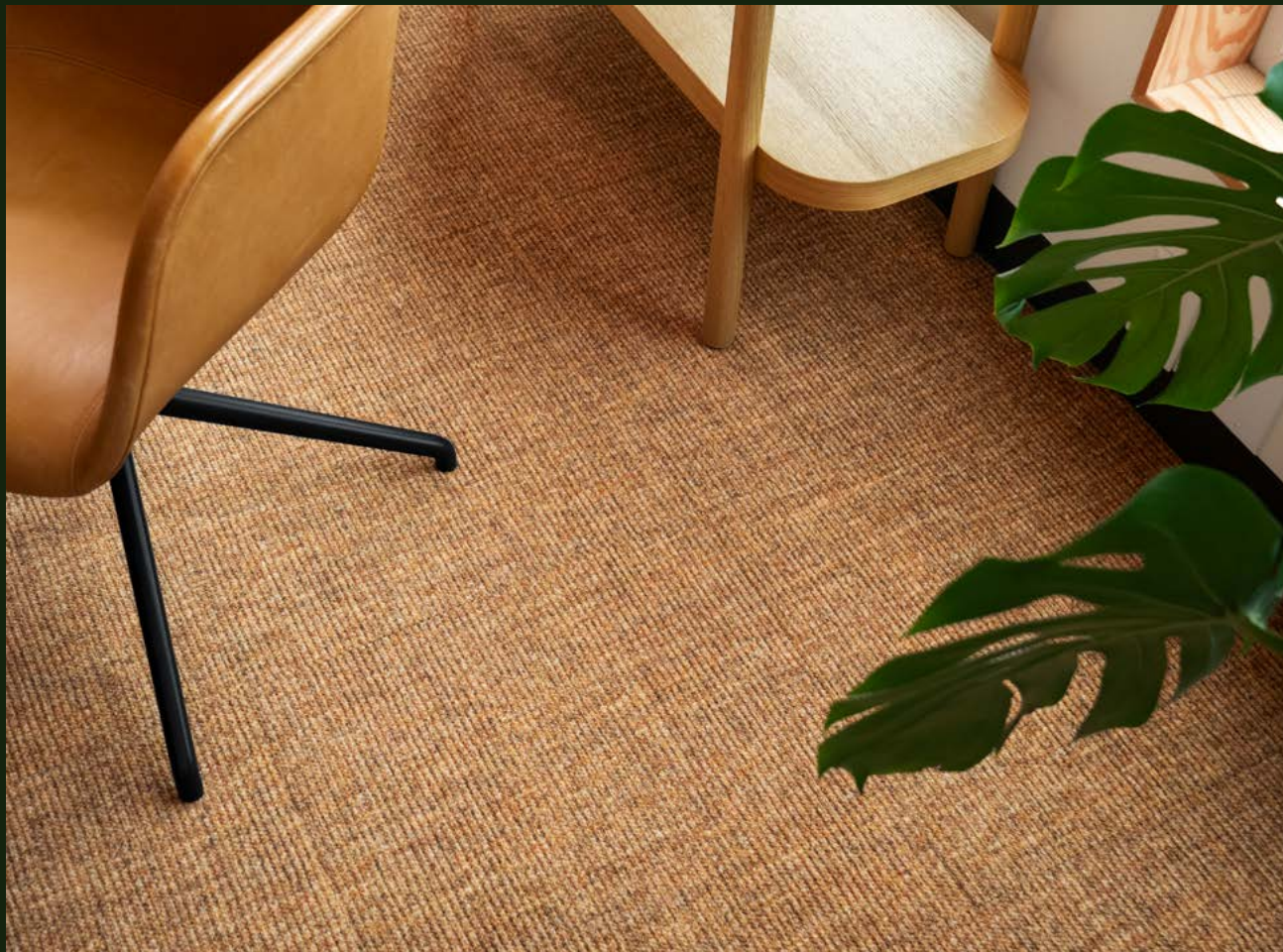


Ridge | Honeycomb
Conference Room | Seattle, WA

The sisal mirage. See texture in a new light.

Modular by design, SynSisal® Tile conjures texture through optical mirage: a ribbed, dimensional surface that reveals its full effect once it repeats across the floor, where it becomes indistinguishable from natural sisal.

It is not an illusion—it is an invitation to bring the striated earth tones and intricate depth of woven fiber to heavily trafficked commercial environments. Forget natural limitations. With SynSisal® Tile, seeing is believing.



Responsible materials. Proven performance.

Made using 100% regenerated ECONYL® yarns and a recyclable PES backing.

Blue Angel certified (DE-UZ 128)

Eligible for LEED points

Miljöbyggnad Gold & Bronze ratings

BREEAM-SE exemplary level
(Hea O2 Indoor air quality)

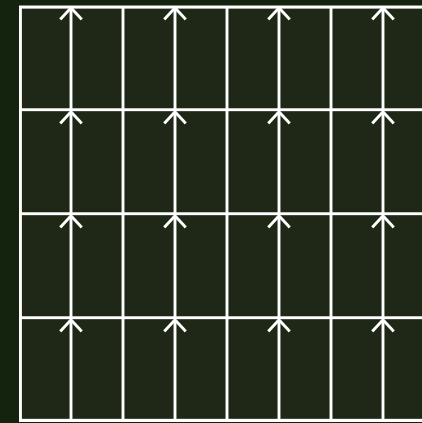


Installation Simplified. Just place and press.

With a self-adhesive backing, save time and money on installation.
Replacing a single tile takes just seconds and can be done by anyone.



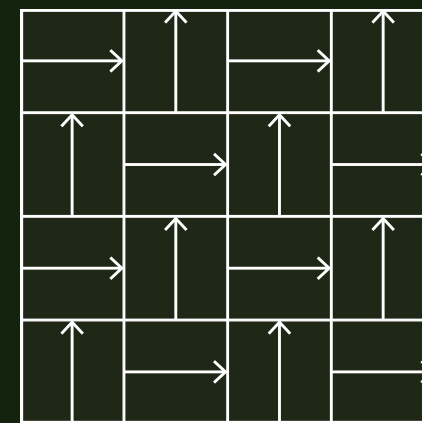
Installation Patterns



Monolithic

A continuous wall-to-wall look.

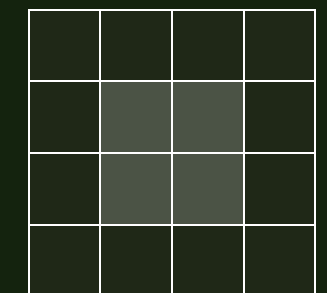
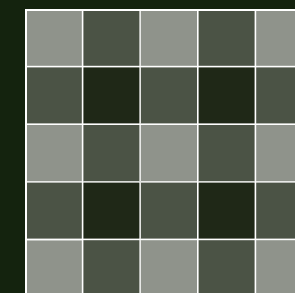
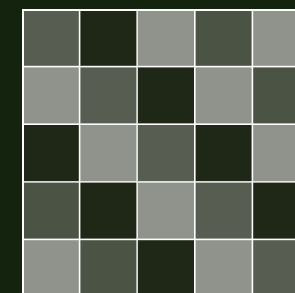
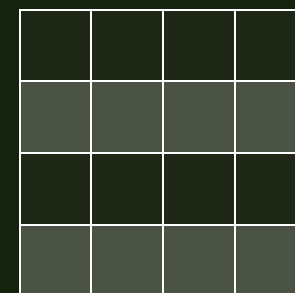
Row-to-row alignment: When tiles are placed next to each other, the pattern aligns seamlessly, with each individual bouclé row lining up with the corresponding row in the adjacent tile. If rows are misaligned, rotate the tile 180° to restore proper row alignment and continue the pattern.



Quarter Turn

All square carpet tiles can be installed in a quarter-turn layout for a checkered effect.

Mix tile colors to create unique, beautiful patterns.





SynSisal®



Tile | Specifications

Product Overview

Product Type	Tile
Recommended Use	Indoor, Heavy Contract, Class 33
Pile Material	ECONYL® PA6, Regenerated Nylon
Tile Size	50 × 50 cm 19.7" × 19.7"
Country of Origin	Germany

Construction

Production Method	Tufted
Weave Structure	1/10" loop, printed
Tile Weight	approx. 1.2 lbs or 0.5 kg
Weight per Box	11.5 kg or 25.4 lbs
Total Height	6.5 mm (0.26" approx.)
Total Weight	approx. 2,720 g/m ² (approx. 8.91 oz/ft ²)
Tiles per Box	20

Performance

Secondary Backing	100% recyclable PES with self-stick adhesive
Use Class	Indoor, Heavy Contract, Class 33
Fire Rating	Bfl-s1
Cleanability	Easy to clean
Castor Chair Suitability	Yes
Stair Suitability	Not suitable for stairs
Color Fastness to Light	≥ 5
Rubbing Fastness to Water	≥ 4
Rubbing Fastness to Color	≥ 4
Sound Absorption	aw: 0.20
Impact Sound Improvement	approx. 27 dB



Bring warmth to
commercial spaces

A modern dressing room with modular utility for everyday performance. The room features several dressing stations, each with a white wall, a gold-colored curtain rod, and a long, flowing brown velvet curtain. A light-colored wooden bench with a grey cushion is in the foreground. A gold-colored stool is visible near the center. A large, arched mirror is on the right wall. The floor is covered in a grey carpet with a subtle pattern. The ceiling has recessed lighting.

Modular utility for
everyday performance

sisal
without
limits 

